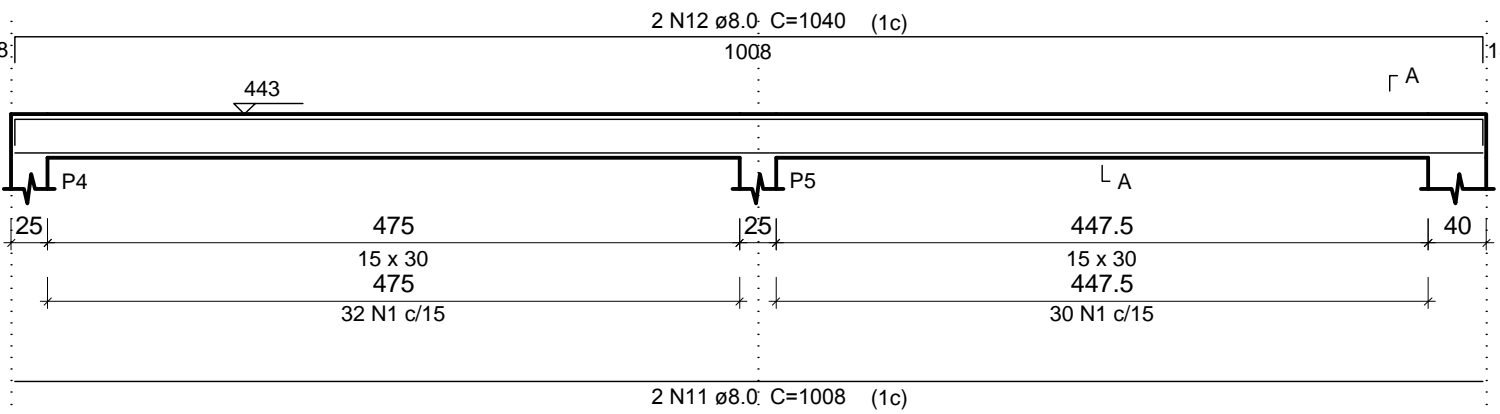
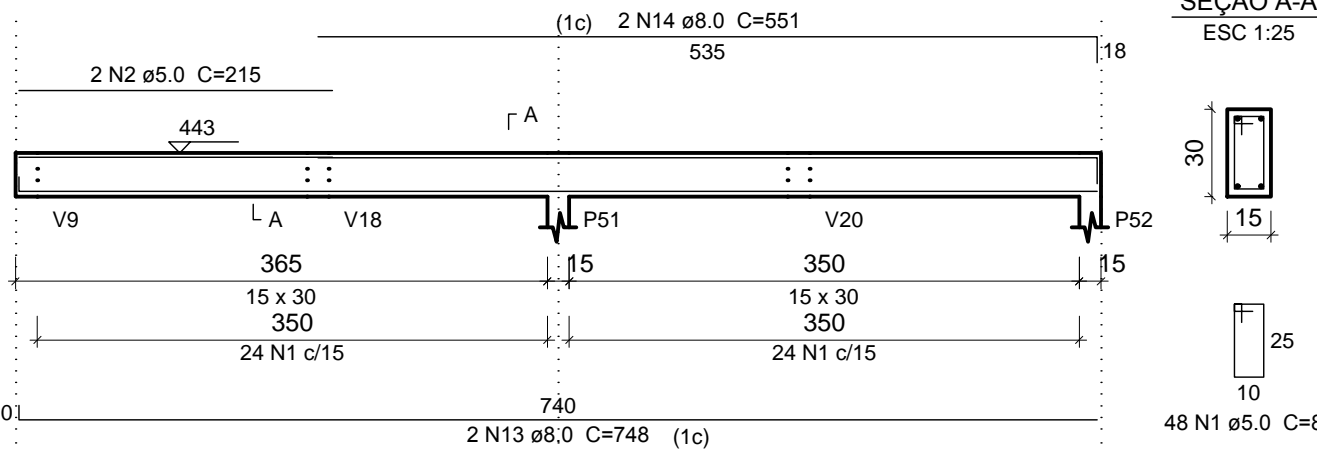


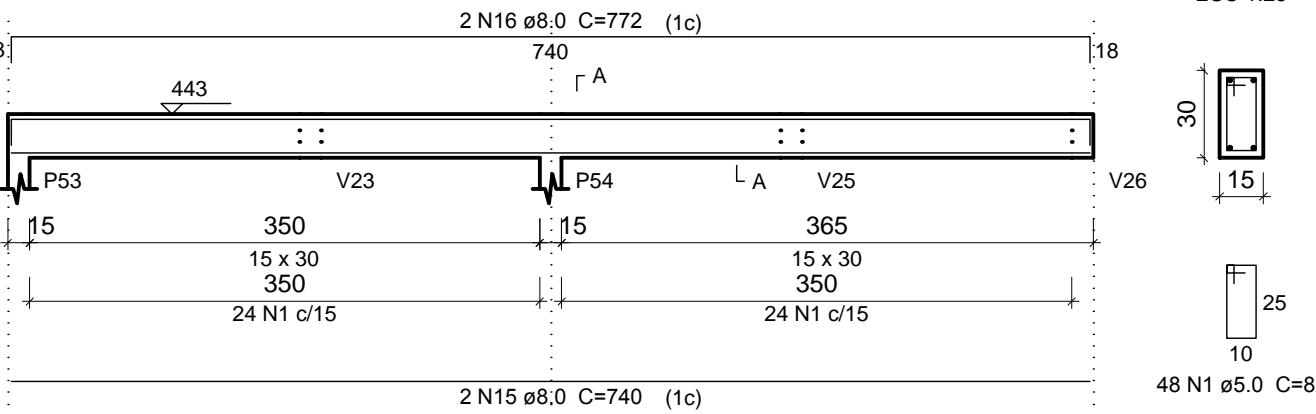
V3 (15 x 30)
ESC 1:50



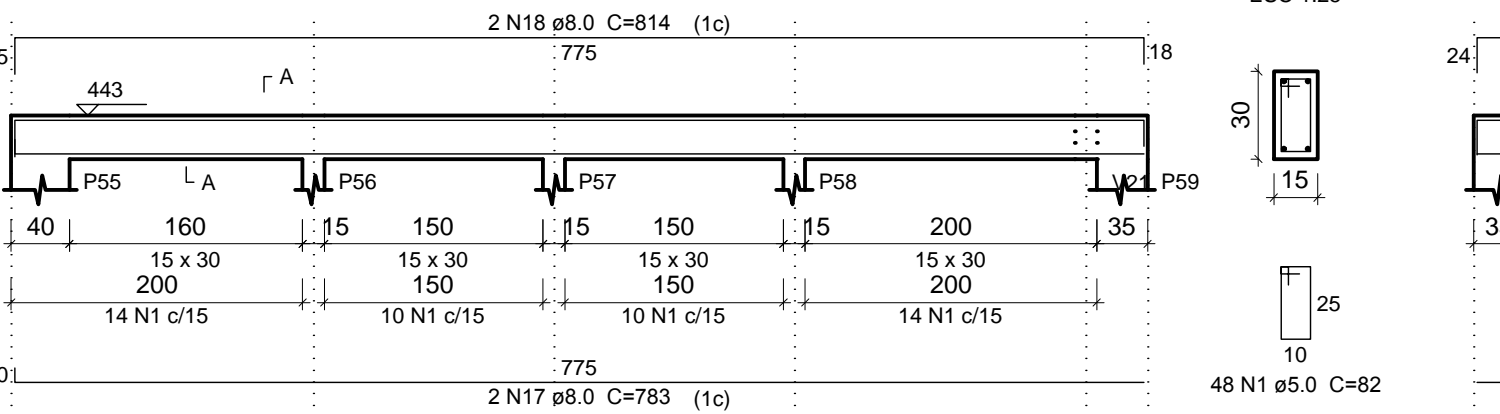
V4 (15 x 30)
ESC 1:50



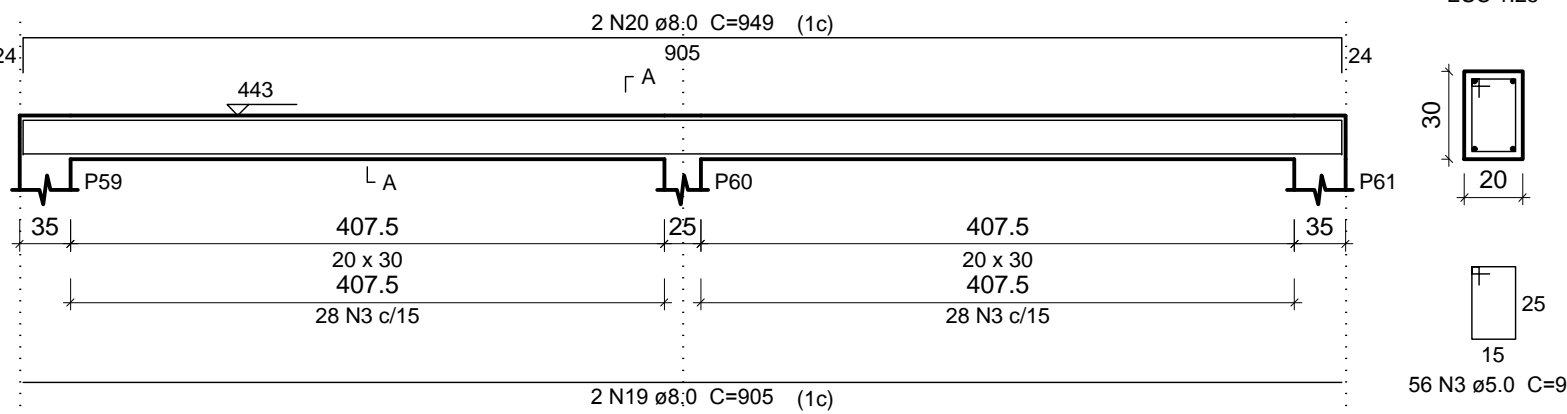
V5 (15 x 30)
ESC 1:50



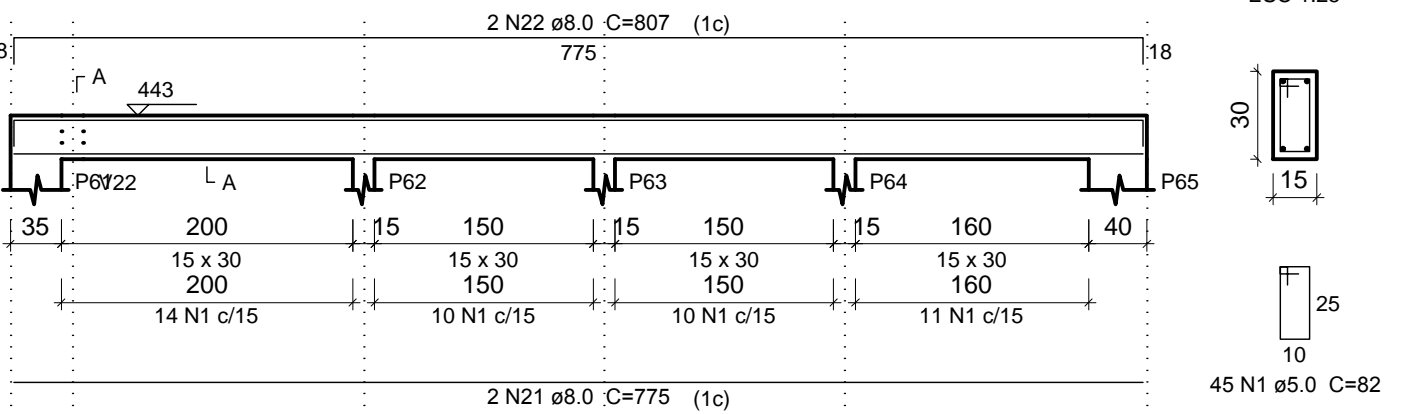
V6 (15 x 30)
ESC 1:50



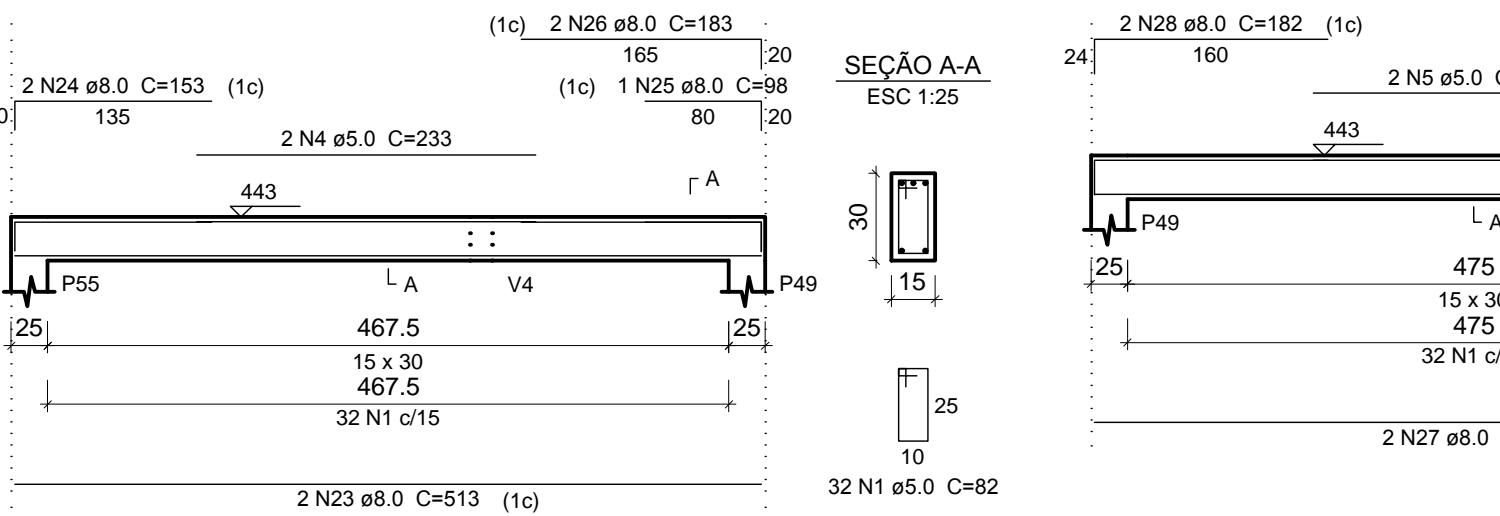
V7 (20 x 30)
ESC 1:50



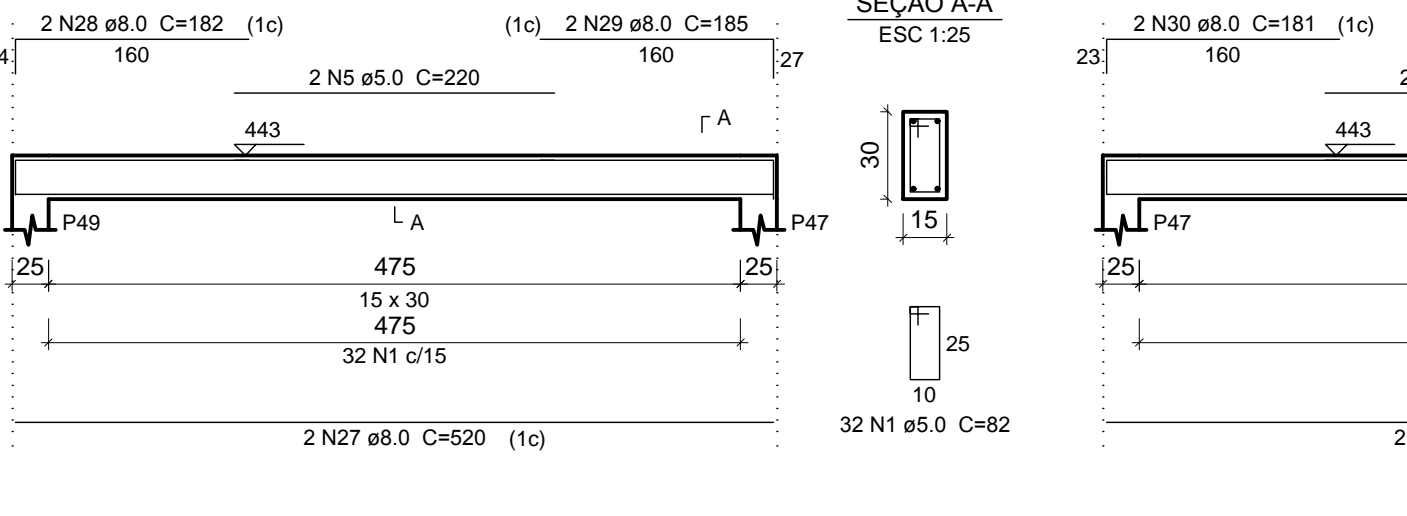
V8 (15 x 30)
ESC 1:50



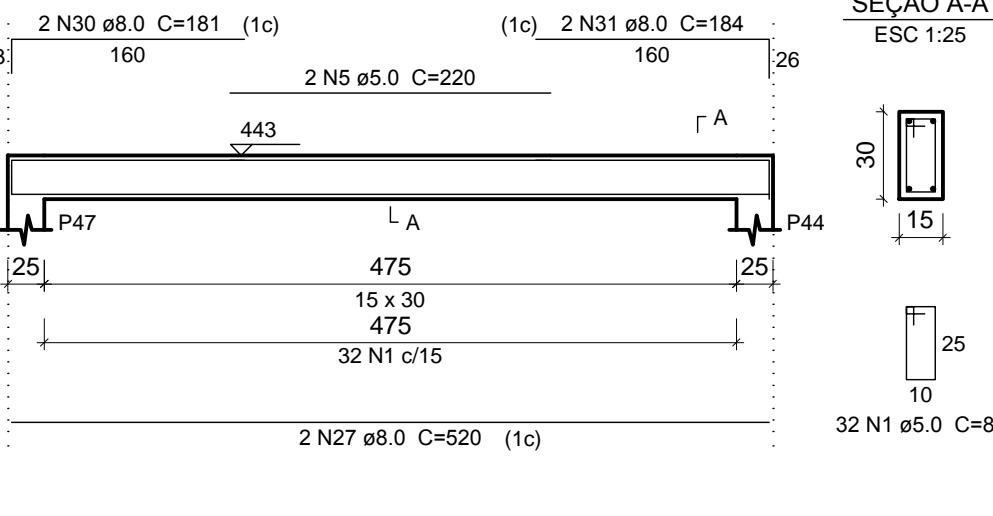
V9 (15 x 30)
ESC 1:50



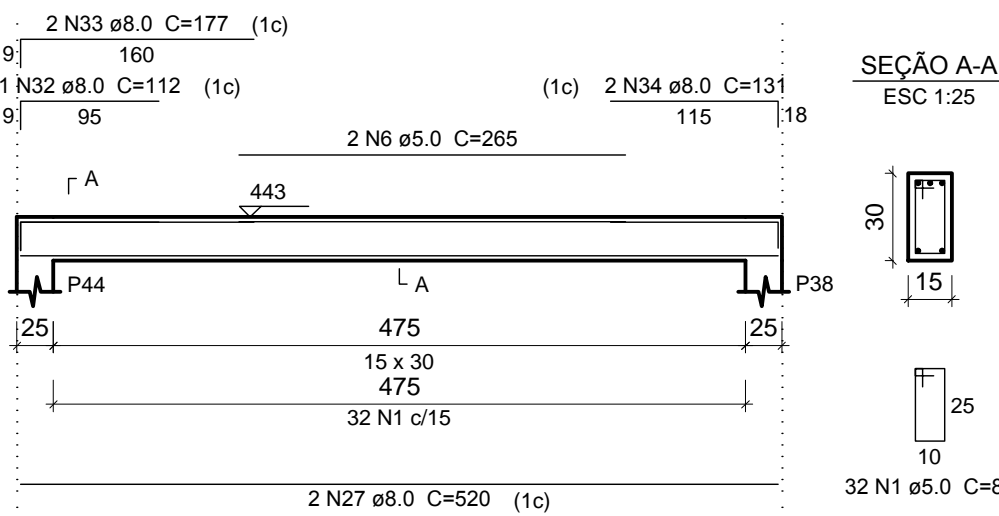
V10 (15 x 30)
ESC 1:50



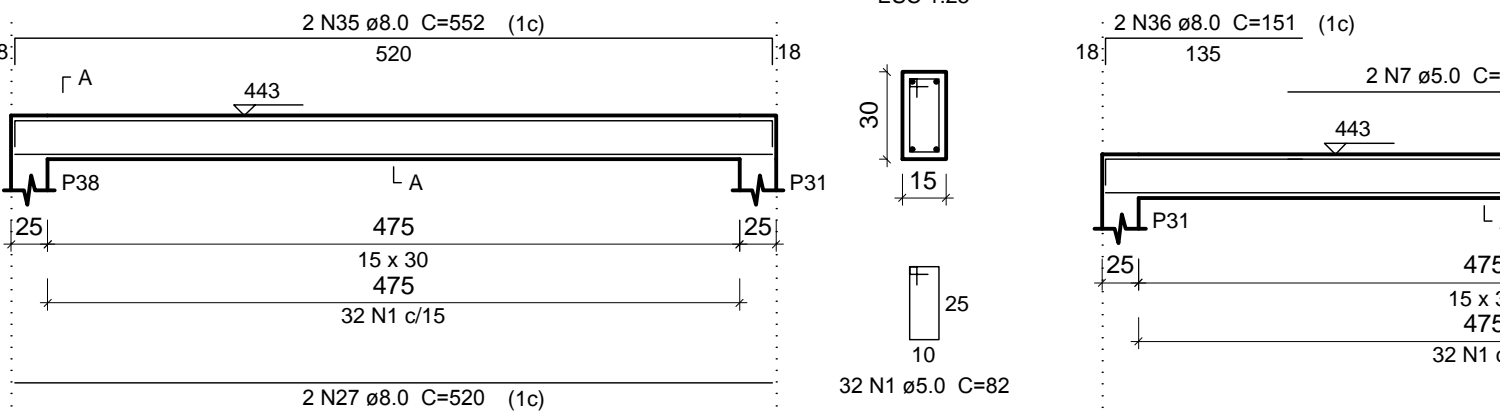
V11 (15 x 30)
ESC 1:50



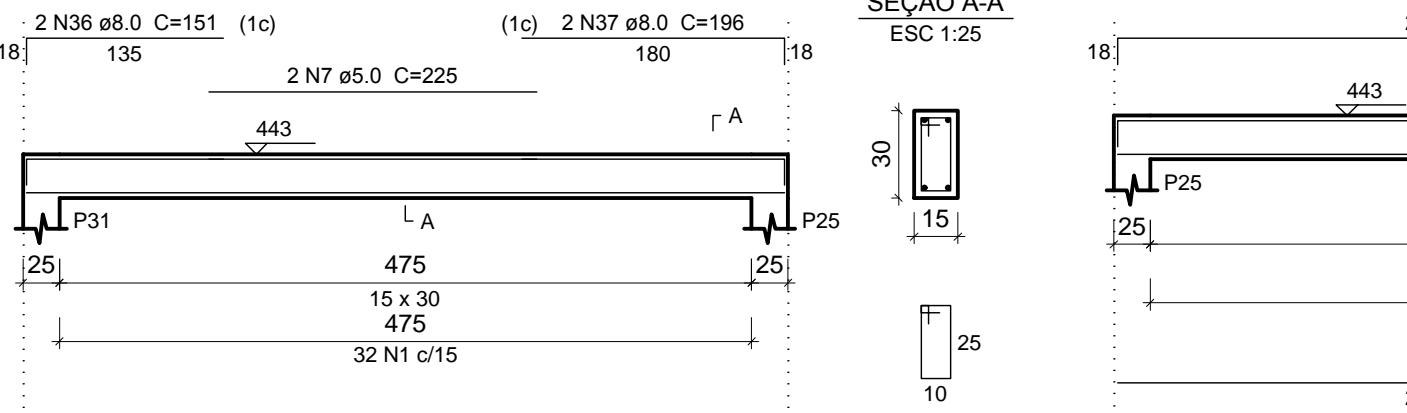
V12 (15 x 30)
ESC 1:50



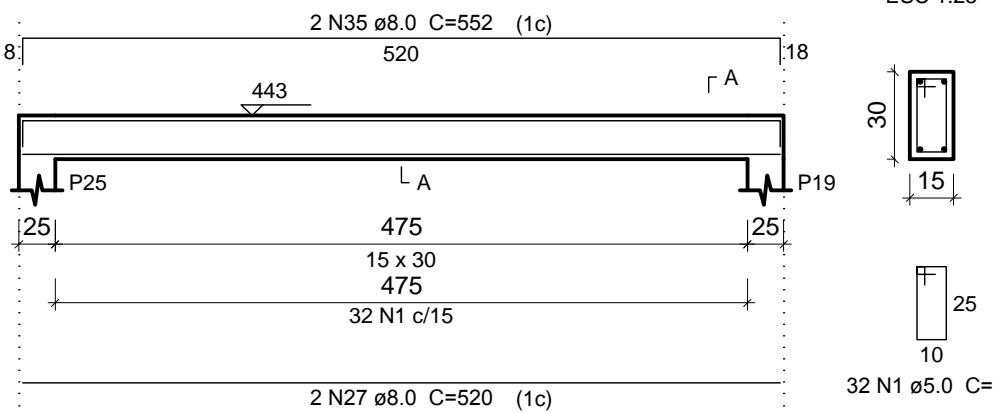
V13 (15 x 30)
ESC 1:50



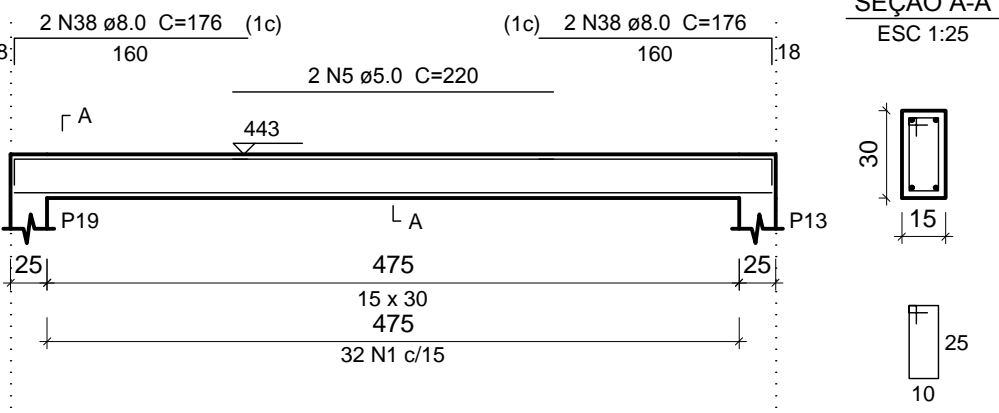
V14 (15 x 30)
ESC 1:50



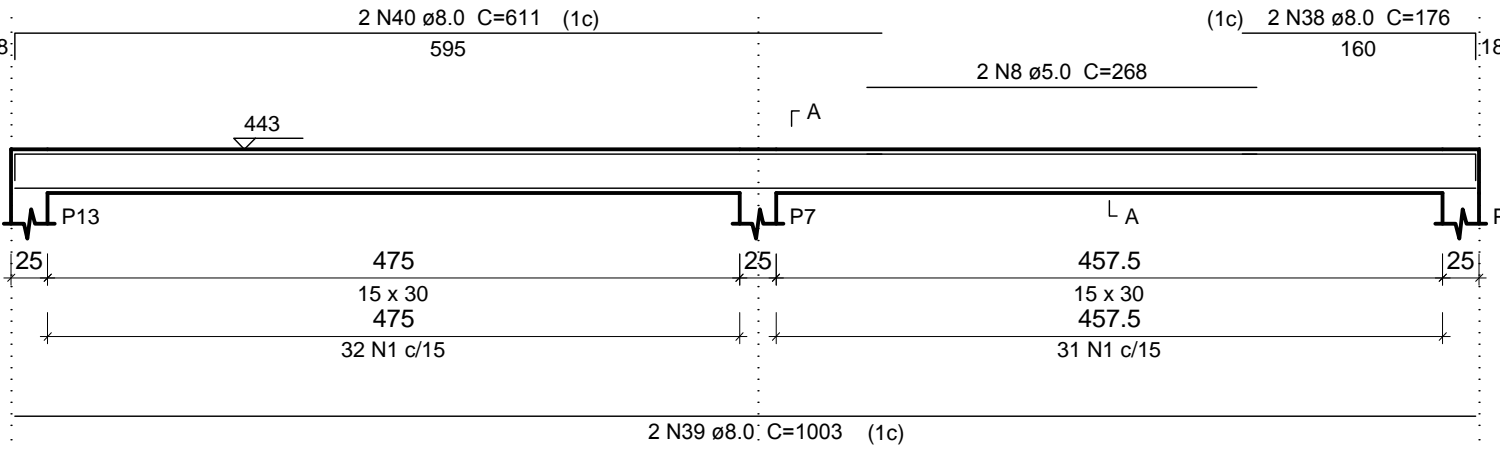
V15 (15 x 30)
ESC 1:50



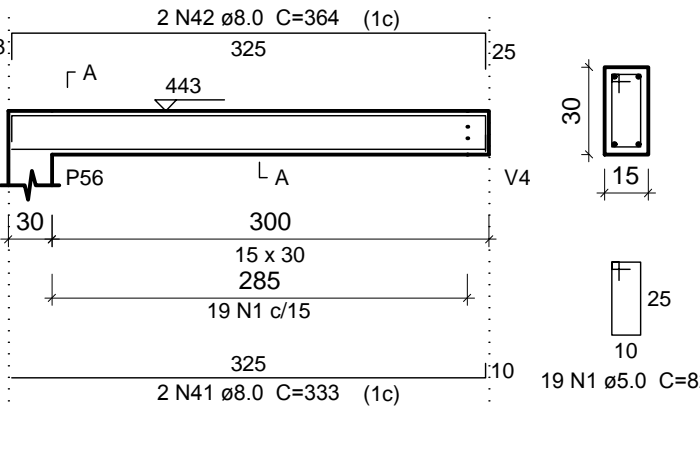
V16 (15 x 30)
ESC 1:50



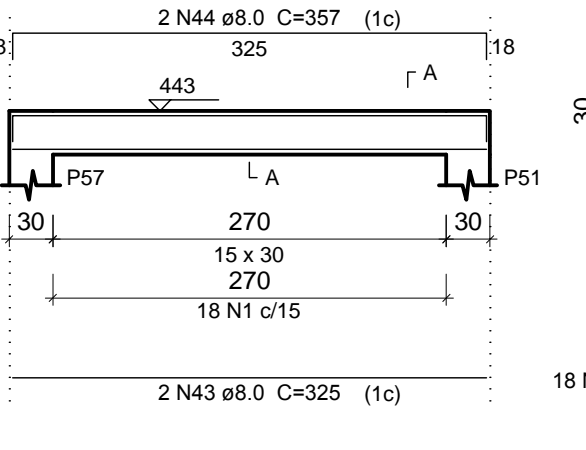
V17 (15 x 30)
ESC 1:50



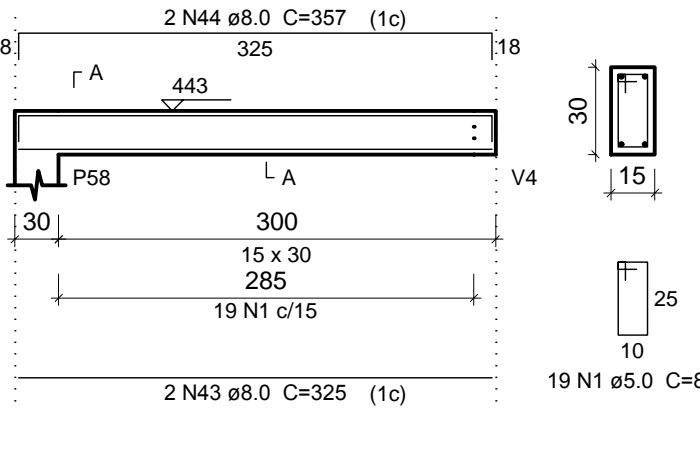
V18 (15 x 30)
ESC 1:50



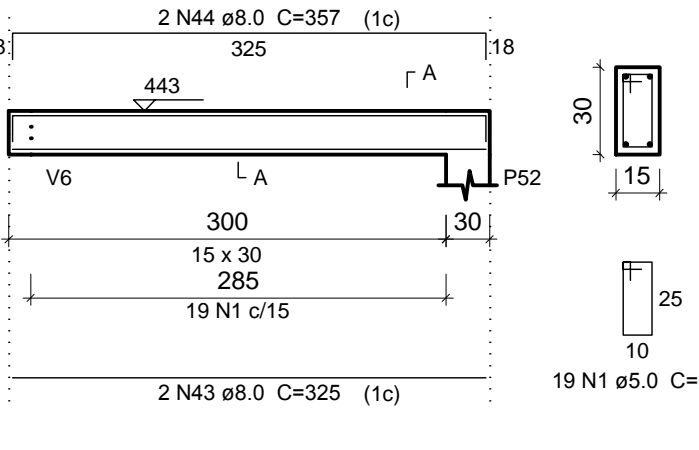
V19 (15 x 30)
ESC 1:50



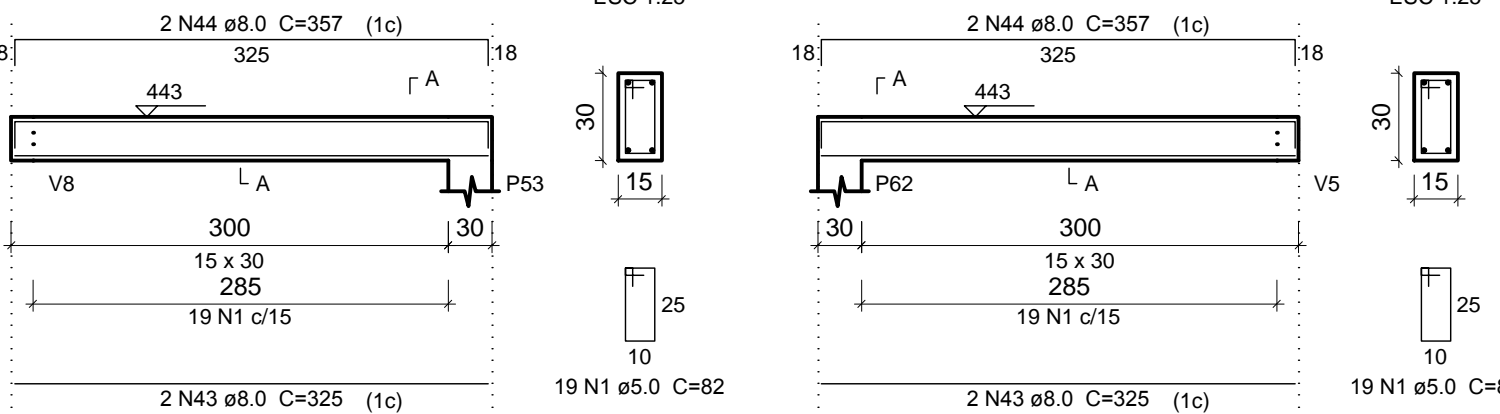
V20 (15 x 30)
ESC 1:50



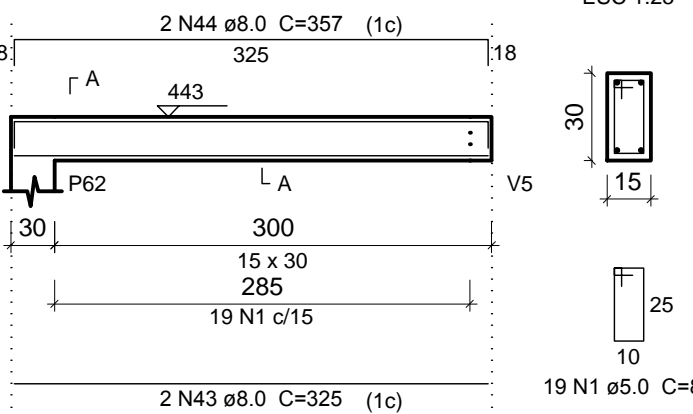
V21 (15 x 30)
ESC 1:50



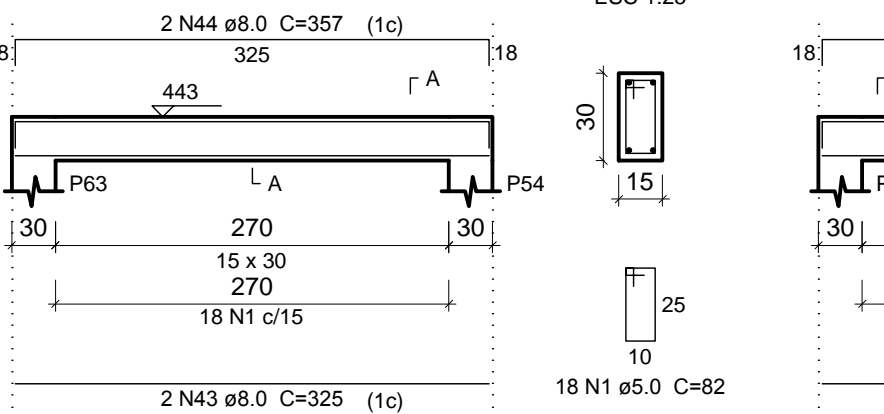
V22 (15 x 30)
ESC 1:50



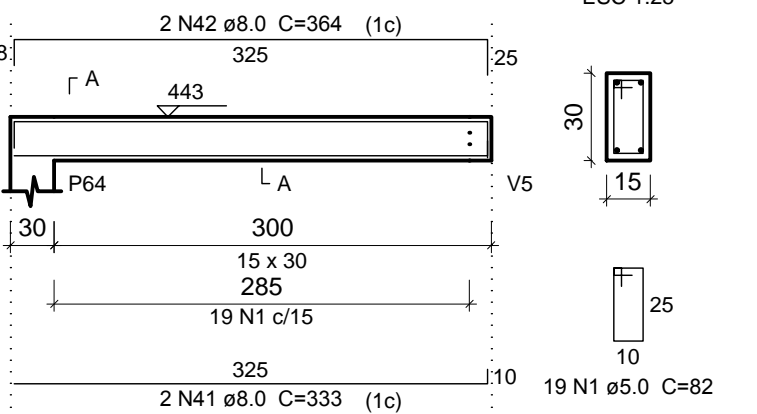
V23 (15 x 30)
ESC 1:50



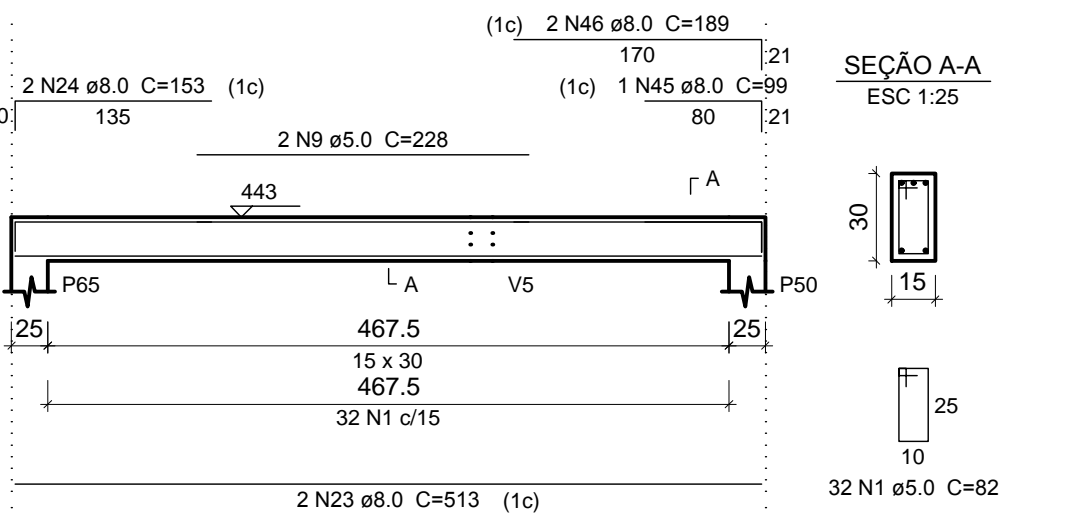
V24 (15 x 30)
ESC 1:50



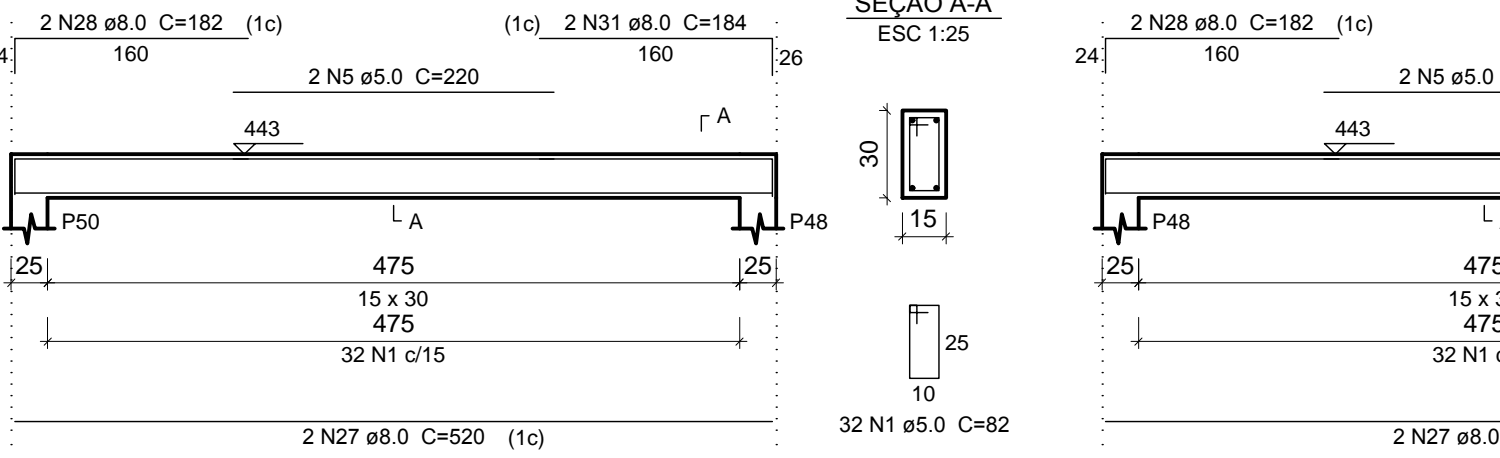
V25 (15 x 30)
ESC 1:50



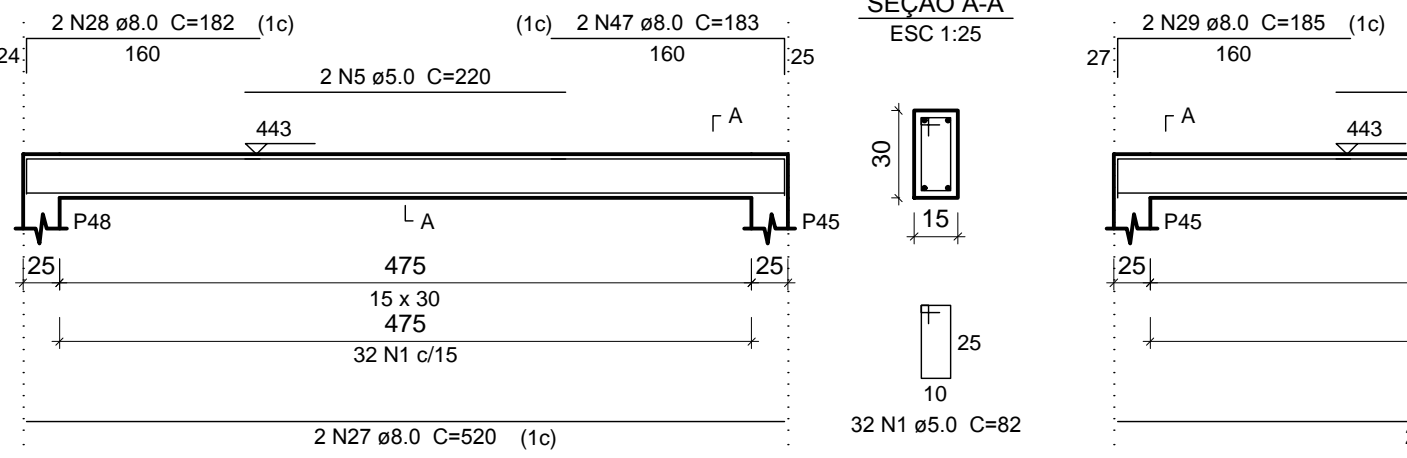
V26 (15 x 30)
ESC 1:50



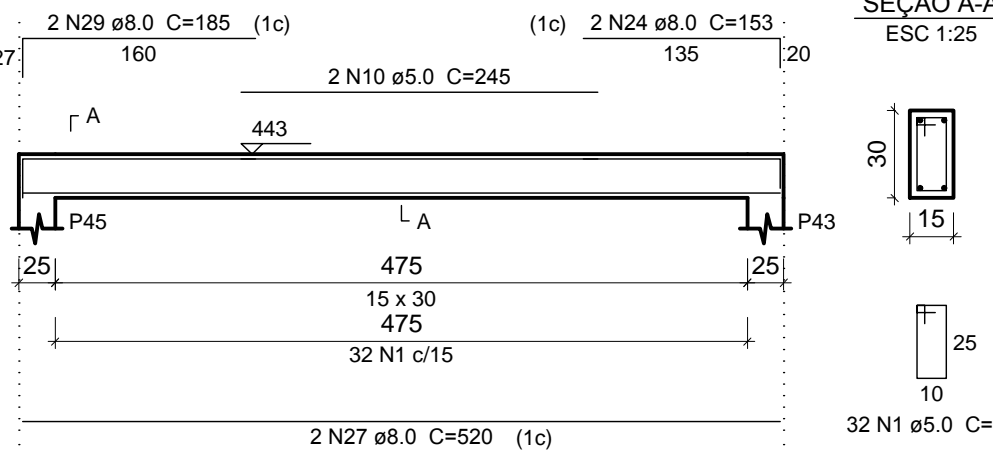
V27 (15 x 30)
ESC 1:50



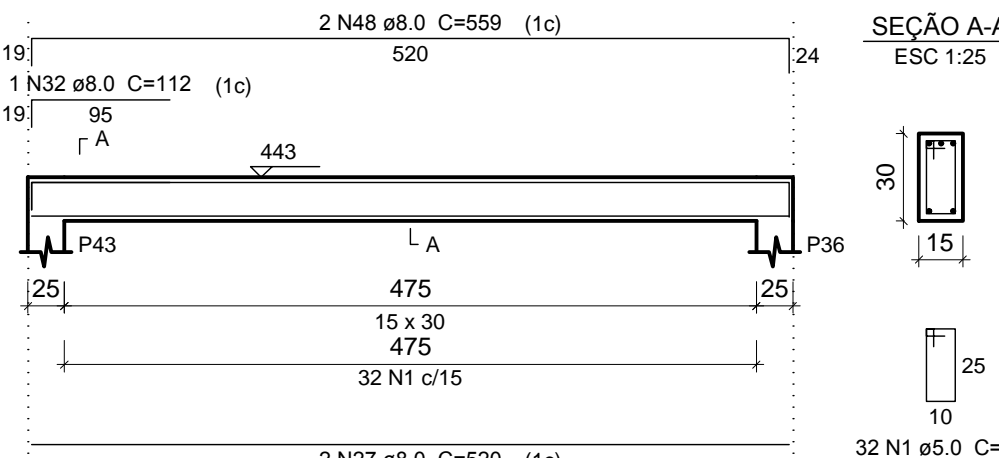
V28 (15 x 30)
ESC 1:50



V29 (15 x 30)
ESC 1:50



V30 (15 x 30)
ESC 1:50



Relação do aço

AÇO	N	DIAM (mm)	QUANT	C.UNIT (cm)	C.TOTAL (cm)
CA60	1	5.0	880	82	72160
	2	5.0	2	215	430
	3	5.0	56	92	5152
	4	5.0	2	233	466
	5	5.0	10	220	2200
	6	5.0	2	265	530
	7	5.0	2	225	450
	8	5.0	2	268	536
	9	5.0	2	228	456
	10	5.0	2	245	490
CA50	11	8.0	2	1008	2016
	12	8.0	2	1040	2080
	13	8.0	2	748	1496
	14	8.0	2	551	1102
	15	8.0	2	740	1480
	16	8.0	2	772	1544
	17	8.0	2	783	1566
	18	8.0	2	814	1628
	19	8.0	2	905	1810
	20	8.0	2	949	1898
	21	8.0	2	775	1550
	22	8.0	2	807	1614
	23	8.0	4	513	2052
	24	8.0	6	153	918
	25	8.0	1	98	98
	26	8.0	2	183	366
	27	8.0	22	520	11440
	28	8.0	6	182	1092
	29	8.0	4	185	740
	30	8.0	2	181	362
	31	8.0	4	184	736
	32	8.0	2	112	224
	33	8.0	2	177	354
	34	8.0	2	131	262
	35	8.0	4	552	2208
	36	8.0	2	151	302
	37	8.0	2	196	392
	38	8.0	6	176	1056
	39	8.0	2	1003	2006
	40	8.0	2	611	1222
	41	8.0	4	333	1332
	42	8.0	4	364	1456
	43	8.0	12	325	3900
	44	8.0	12	357	4284
	45	8.0	1	99	99
	46	8.0	2	189	378
	47	8.0	2	183	366
	48	8.0	2	559	1118

Resumo do aço

AÇO	DIAM (mm)	C.TOTAL (m)	PESO + 10 % (kg)
CA50	8.0	585.5	254.1
CA60	5.0	828.7	140.5
PESO TOTAL (kg)			
CA50		254.1	
CA60		140.5	

Volume de concreto (C-30) = 7.08 m³
Área de forma = 116.18 m²

PREFEITURA MUNICIPAL
DE SÃO JOÃO DO PARAÍSO/MG



MERCADO MUNICIPAL

PROPRIETÁRIO: PREFEITURA MUNICIPAL DE SÃO JOÃO DO PARAÍSO/MG
CNPJ: 24.791.154/0001-07

MÔNICA CRISTINE MENDES
PREFEITA MUNICIPAL

ENDEREÇO: PRAÇA DO MERCADO S/Nº - SEDE DO MUNICÍPIO - SÃO JOÃO DO PARAÍSO/MG

PROJETO: PROJETO ESTRUTURAL

RESPONSÁVEL TÉCNICO:

MARCOS PAULO MADUREIRA LOPES
ENGENHEIRO CIVIL - CREA MG: 224.188/D

ÁREAS:
- ÁREA PAVIMENTO TERREO: 1.200,00 M2
- ÁREA SUB-SOLO (CONSTRUÍDA): 714,00 M2
- ÁREA TOTAL EDIFICADA: 1.348,74 M2
- ÁREA TOTAL (INCLUSIVE PLOTIS) = 1.914,00 M2

RRT Nº:

DATA: MARÇO/2020

CONTEÚDO: VIGAS NÍVEL ESTRUTURA METÁLICA

PROPOSTA Nº:

ESCALA: INDICADA